

Wight Module Kit

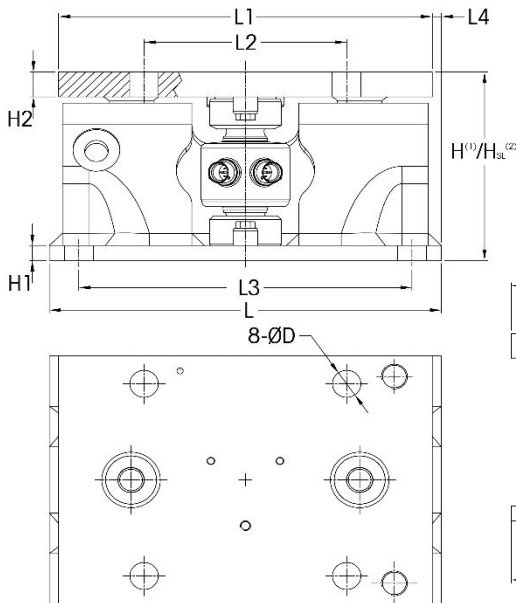
Wight Module Kit

As known as “Hopper scale” are industrial weighing systems designed to measure materials as they are transferred between or process stages. Weigh modules and load cells enable the quick and safe conversion of tanks, vessels, silos, hoppers, conveyors, or other structural systems into scales. Arya Sanaat Savis offers a wide range of weigh modules with capacities from 5 kg up to 300 t.

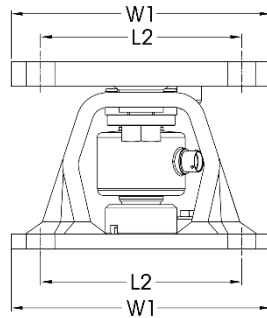
Key Benefits:

- Complete mechanical security includes anti-uplift protection, down-stop protection, and 360° protection.
- The weight module load cells are equipped with a rocker-pin design that automatically aligns load forces for precise weighing. Hermetically sealed load cells are rated IP68/IP69K and can be utilized in any environment. The load cells can be easily inspected or replaced and provide proactive alerts in the case of damage.
- Load cells are individually monitored for overloading, temperature extremes, zero drift, and more. If the load cell's hermetic seal breaks, breach detection will warn. To guarantee the highest uptime, this enables reaction before the system weighs incorrectly or shuts down completely.

Size 1



Size 2



Dimensions and locations

Size	Capacity	H ⁽¹⁾	H _{SL} ⁽²⁾	H1	H2	H3	L	L1	L2	L3	L4	W1	D
1	7.5, 15, 22.5t (16.5, 33, 49.6klb)	152.0 (5.98)	154.0 (6.06)	12.0 (0.47)	20.0 (0.79)	20.0 (0.79)	300.0 (11.8)	286.0 (11.26)	155.0 (6.1)	255.0 (10.04)	7.0 (0.28)	220.0 (8.66)	22.0 (0.87)
2	20, 30, 50t (44, 66, 110klb)	235.0 (9.25)	237.0 (9.33)	21.0 (0.839)	26.0 (1.02)	33.0 (1.30)	365.0 (14.37)	365.0 (14.37)	200.0 (7.87)	315.0 (12.4)	-	273.0 (10.75)	26.0 (1.02)

⁽¹⁾ H Height when activating weigh module by removing SafeLock™ plates.

⁽²⁾ H_{SL} Height when shipping or mounting weigh module with SafeLock™ plates.